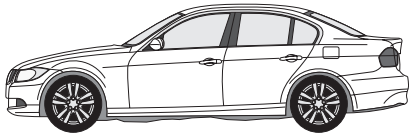
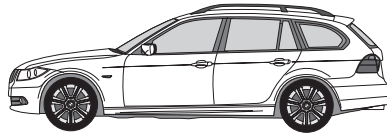


# No. 042607-13

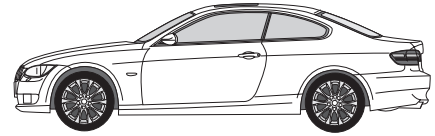
**BMW E90 Bj. 02.05–**



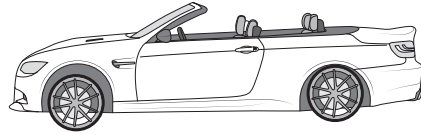
**BMW E91 Bj. 09.05–**



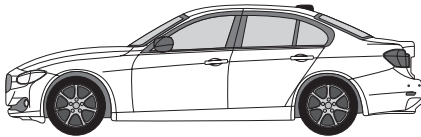
**BMW E92 Bj. 08.06–**



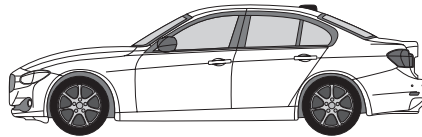
**BMW E93 Bj. 04.07–**



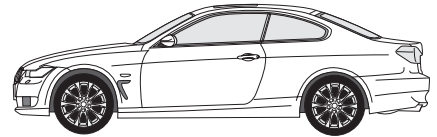
**BMW F30 Bj. 2011–**



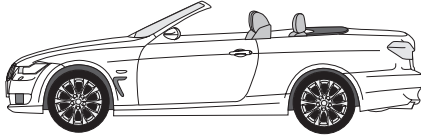
**BMW F31 Bj. 2012–**



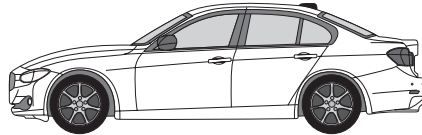
**BMW F32 Bj. 2013–**



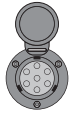
**BMW F33 Bj. 09.13–**



**BMW F34 Bj. 02.12–**



**KIT 042607**

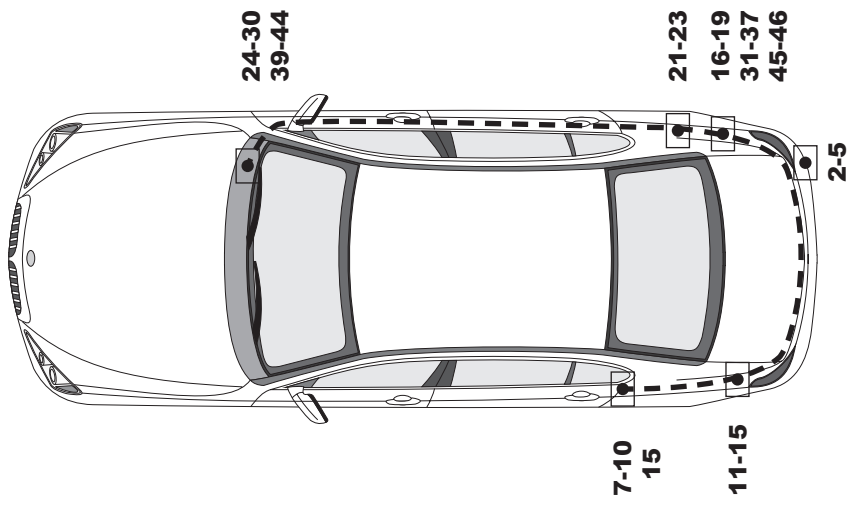
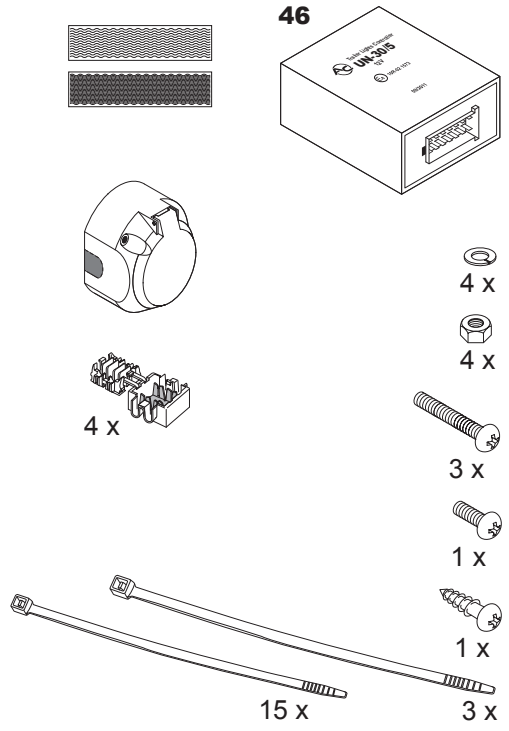
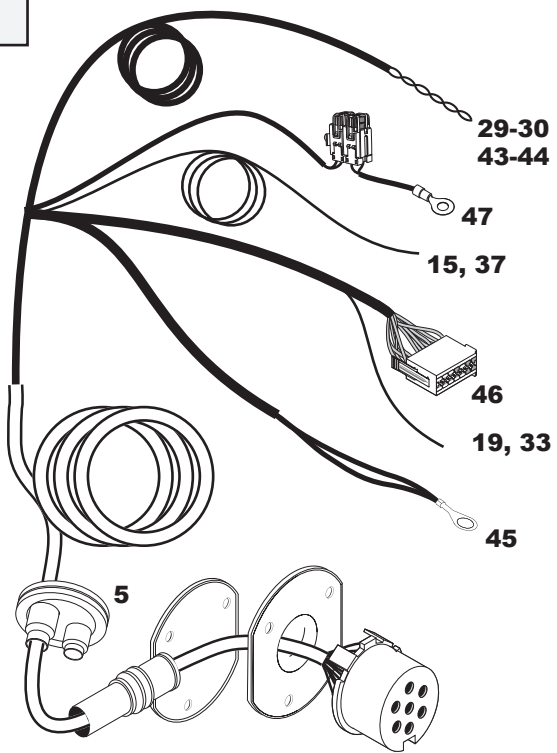


**KIT 042613**

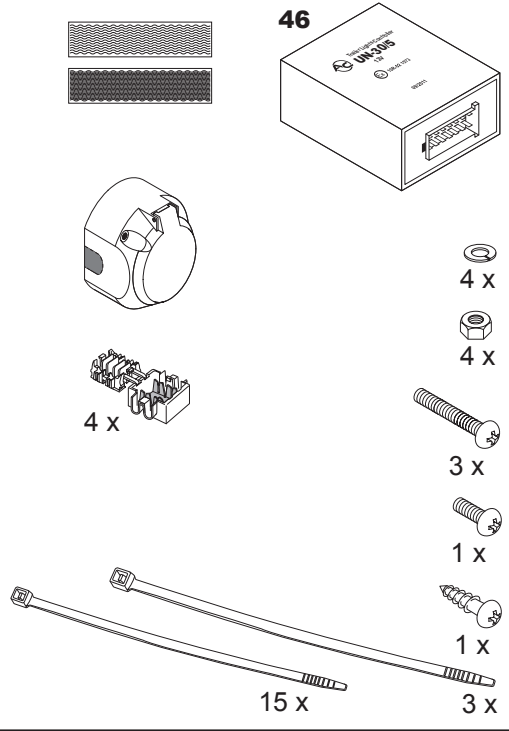
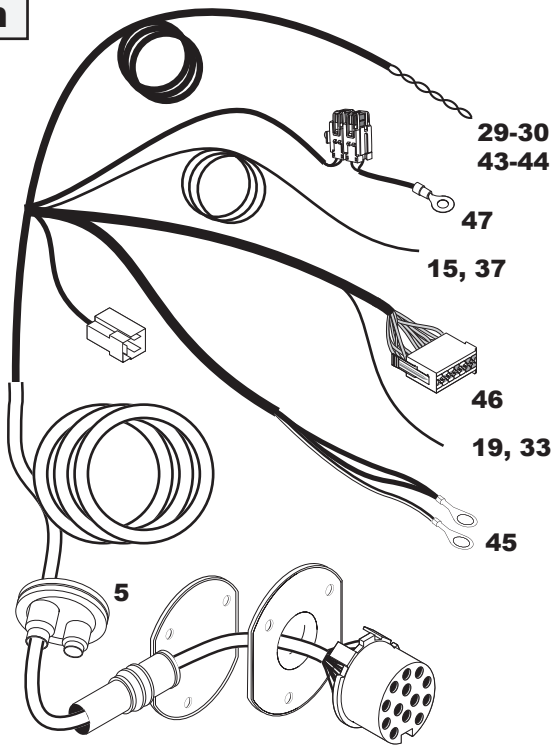


- (D)** Elektrischer Anbausatz für Anhängerkupplung
- (GB)** Electrical Set for Trailer Connection
- (F)** Ensemble électrique pour brancher le crochet d'attelage
- (NL)** Elektrische aansluitset voor trekhaak
- (DK)** Elektrisk tilslutningsæt for trakkrog
- (N)** Elektrisk monteringssett for tilhengerkontakt
- (S)** Elektrisk förbindelsebyggsats av bogseringskrok
- (FIN)** Hinauskoukun sähköliitäntäpaketti
- (I)** Kit di congiunzione del gancio per rimorchio
- (E)** Juego de conexión eléctrica de gancho de remolque
- (CZ)** Elektrická připojovací sestava tažného zařízení
- (H)** Elektromos kábelköteg vonóhorog bekötéséhez
- (RU)** Электрический присоединительный комплект буксирного крюка
- (LT)** Elektroninis jungiamasis traukimo kablio rinkinys
- (LV)** Elektroniskais vilkšanas āķa savienojuma komplekts
- (EST)** Elektriline tiisli ühenduskomplekt
- (SK)** Elektroinštalácia pre zapojenie ťažného zariadenia
- (PL)** Elektryczny zestaw przyłączeniowy haka holowniczego

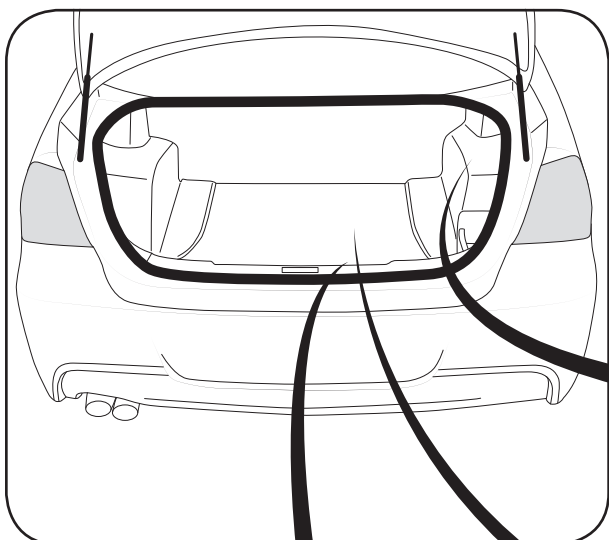
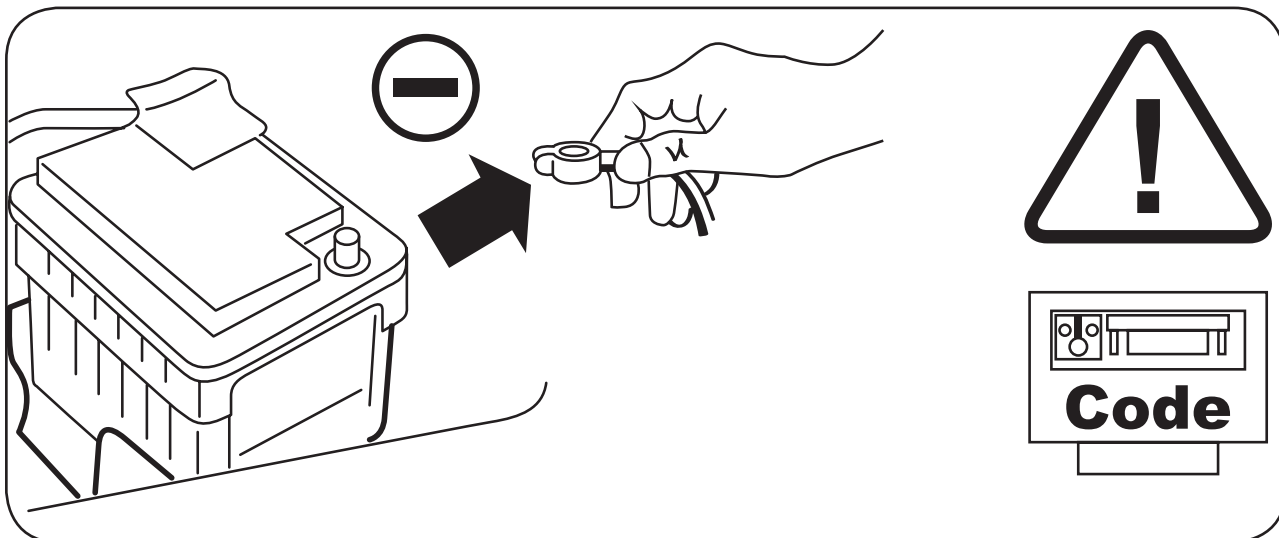
# 7-pin



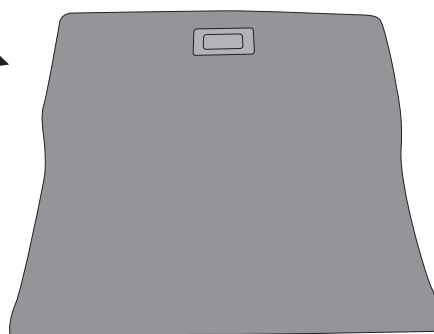
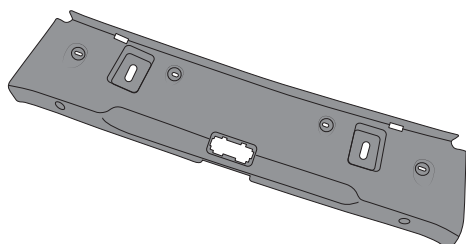
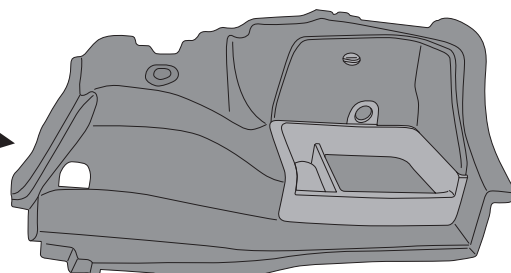
# 13-pin

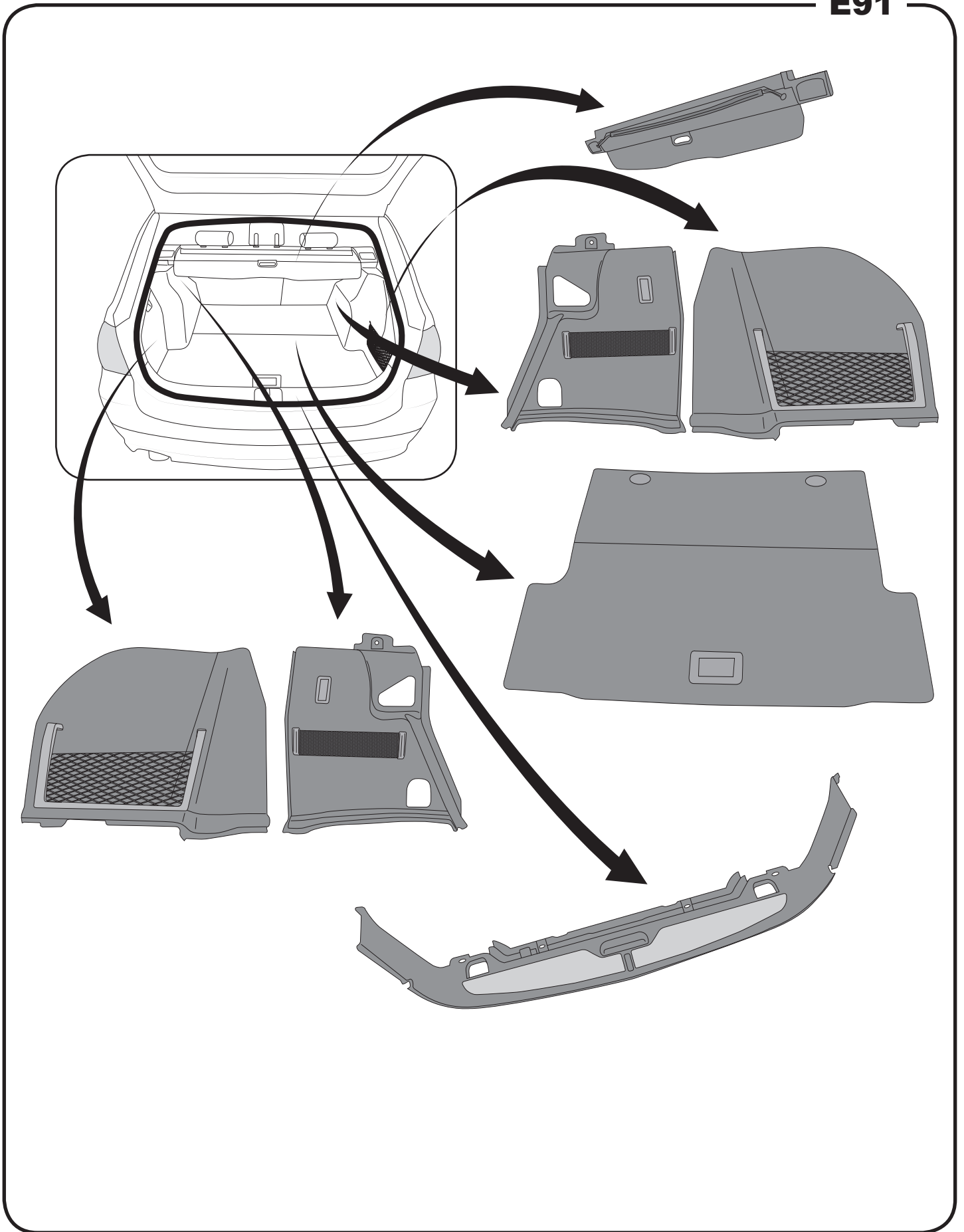


# EINBAUANLEITUNG



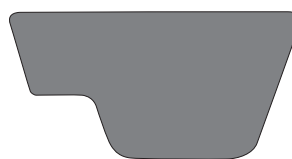
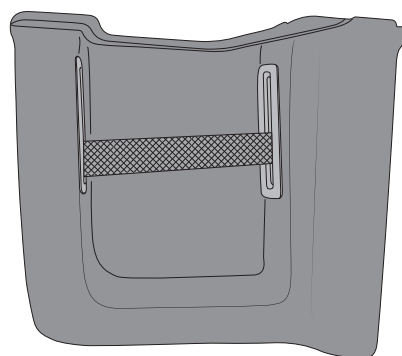
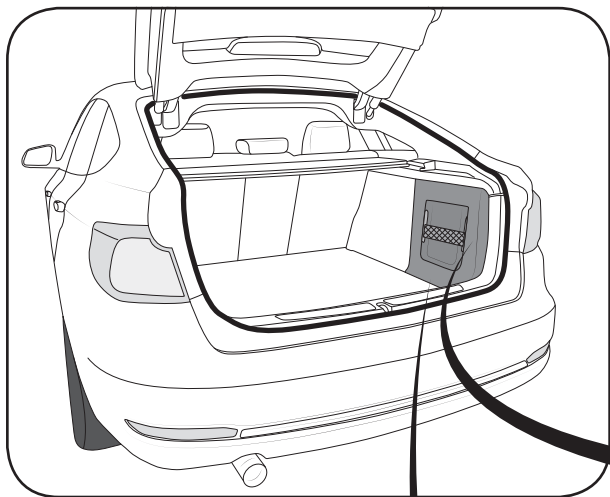
**E90 / E92 / E 93**





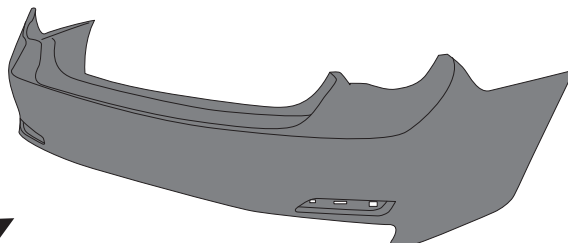
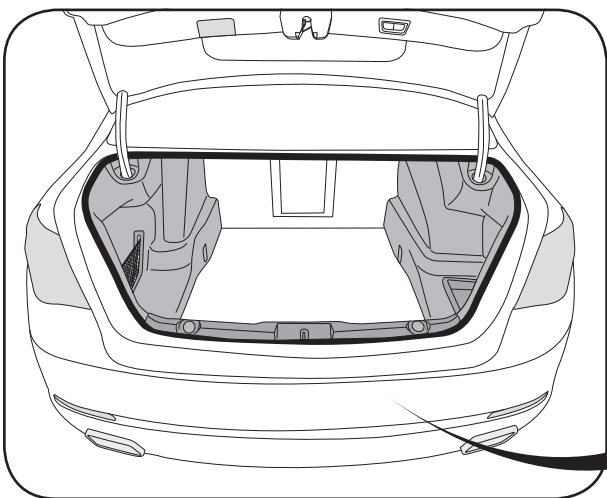
# EINBAUANLEITUNG

F30, F31, F32, F33, F34

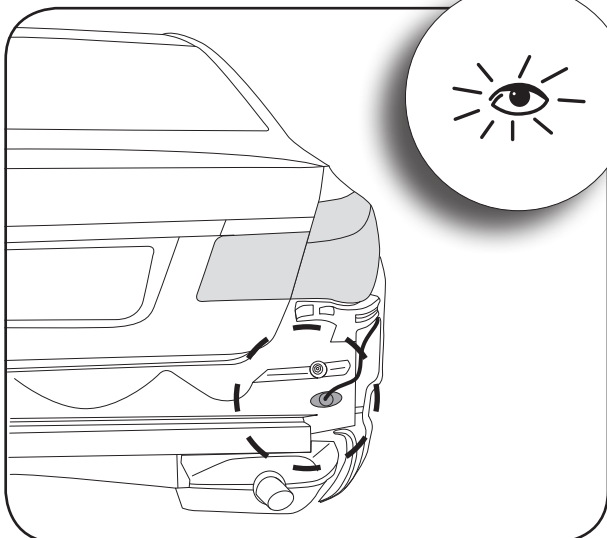


# EINBAUANLEITUNG

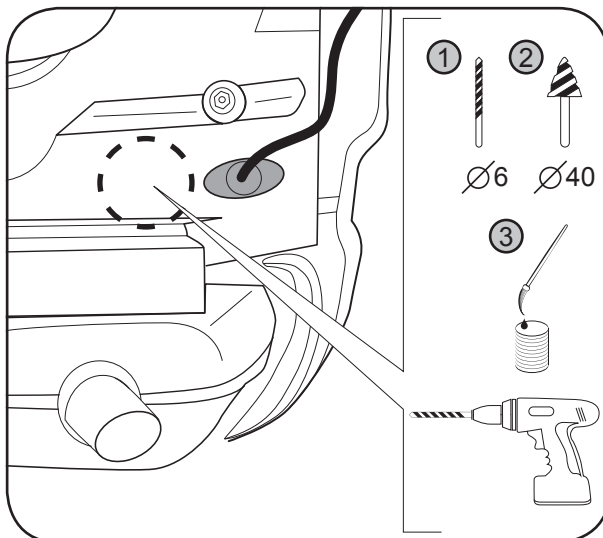
1



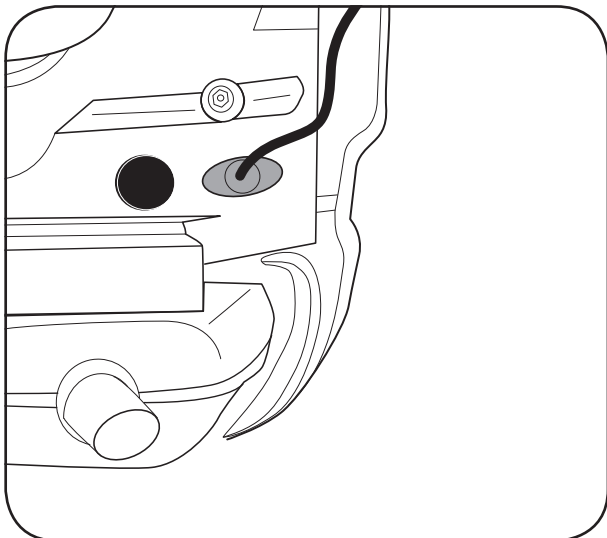
2



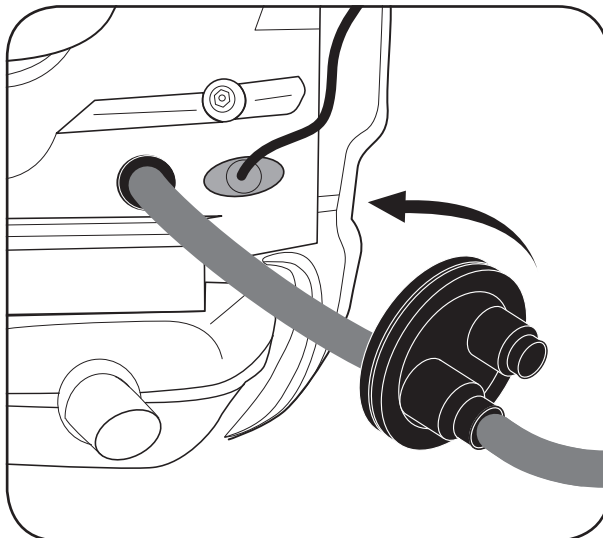
3



4



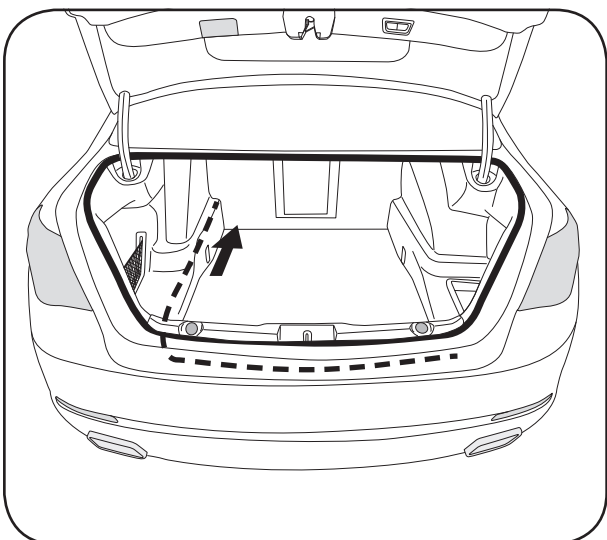
5



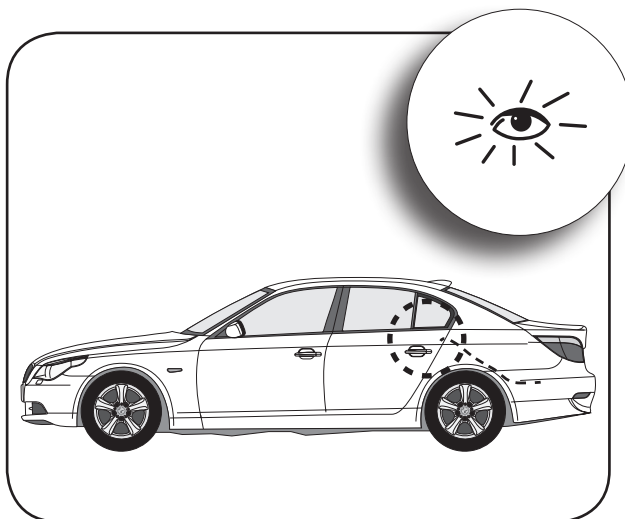
# EINBAUANLEITUNG

E90 / E92

6

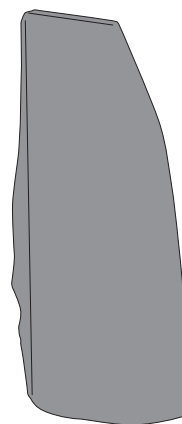
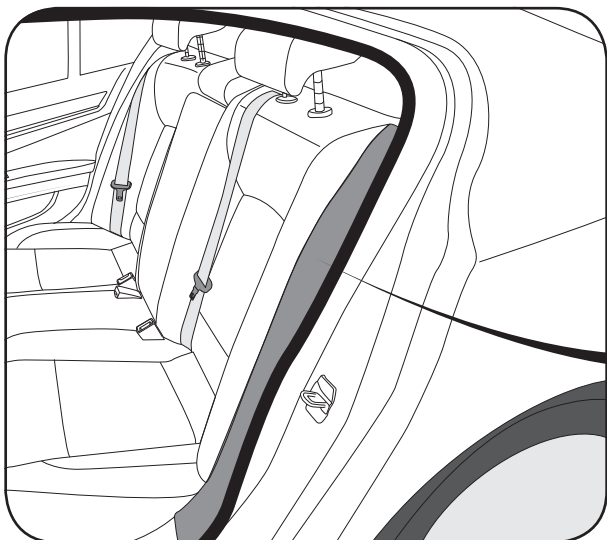


7

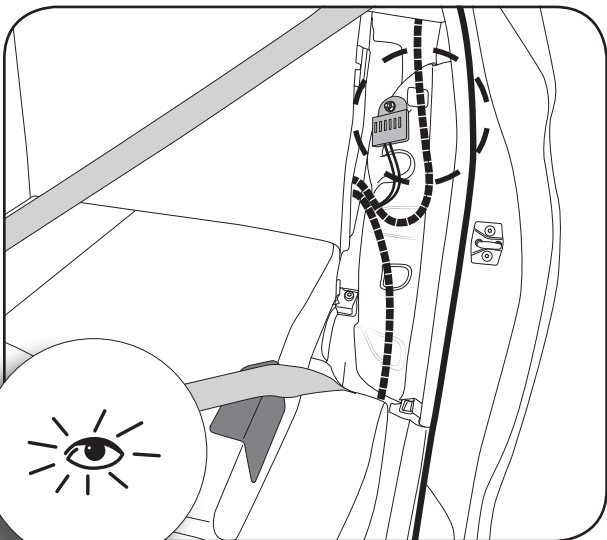


E-Satz or/bk  
e-kit or/bk **STOP**

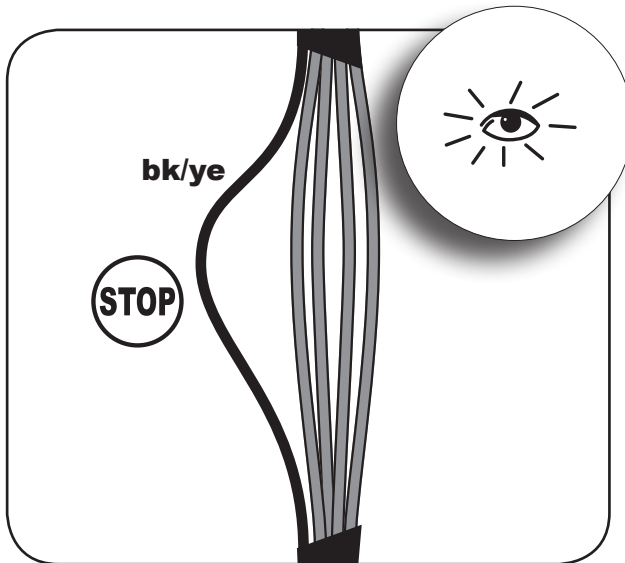
8



9



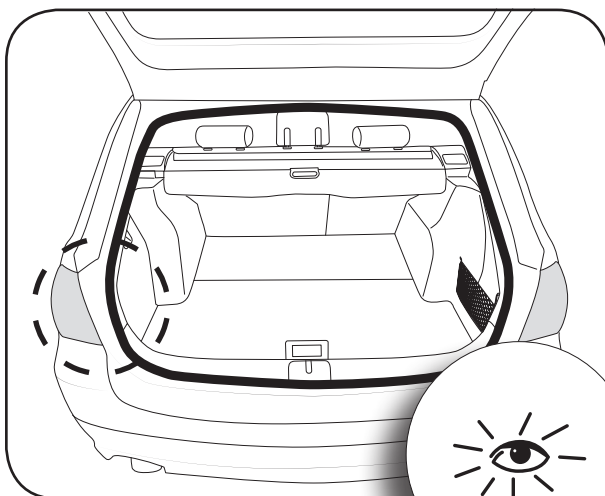
10



# EINBAUANLEITUNG

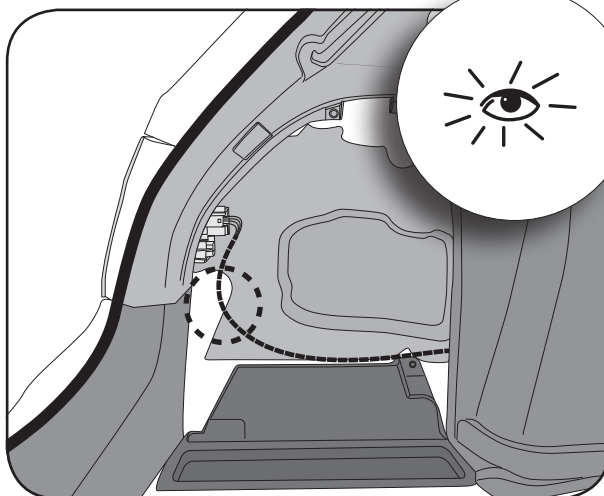
**E91 / E93**

**11**



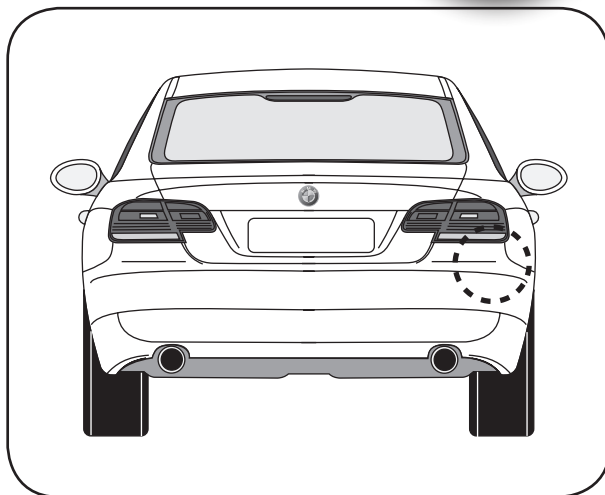
**E91**

**12**



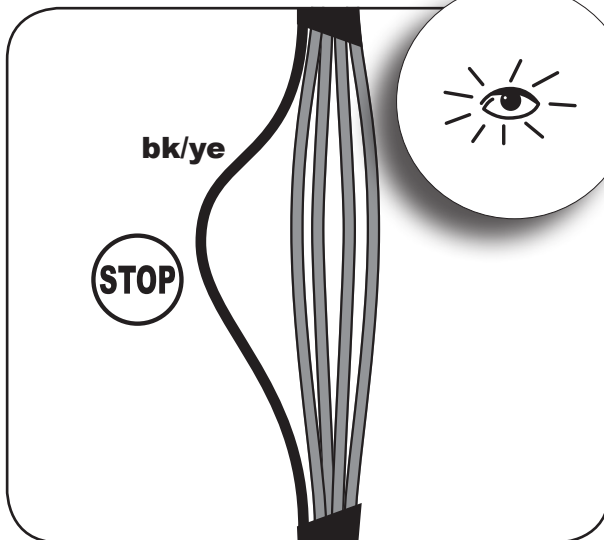
**E91**

**13**

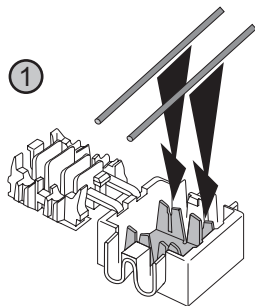


**E93**

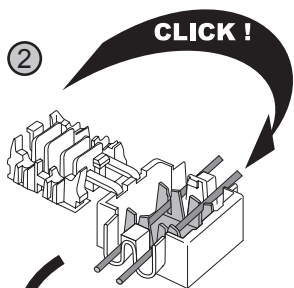
**14**



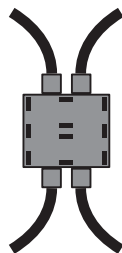
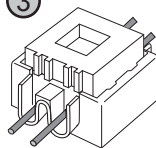
**1**



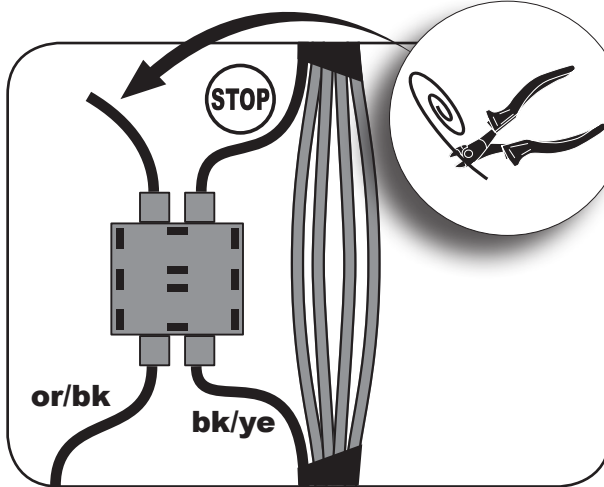
**2**



**3**



**15**



**E-Satz or/bk → kabel bk/ye**

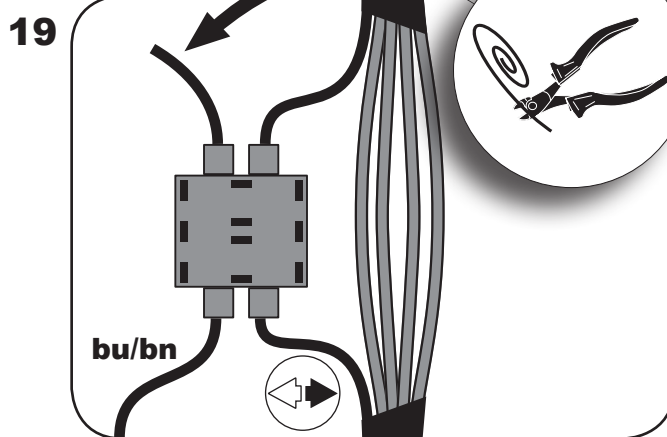
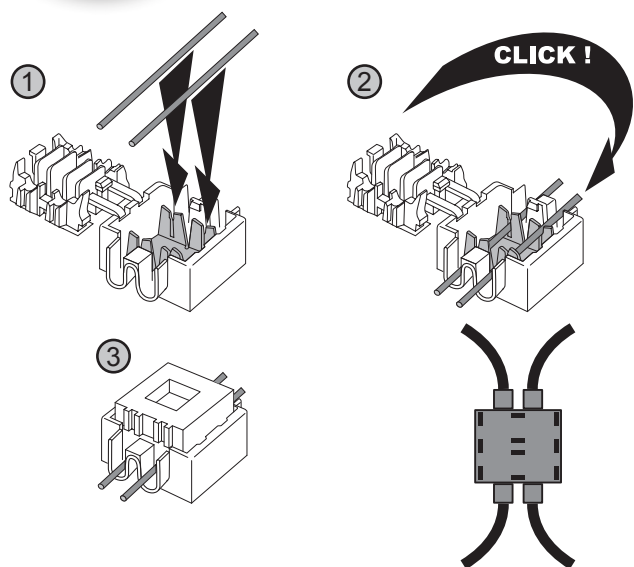
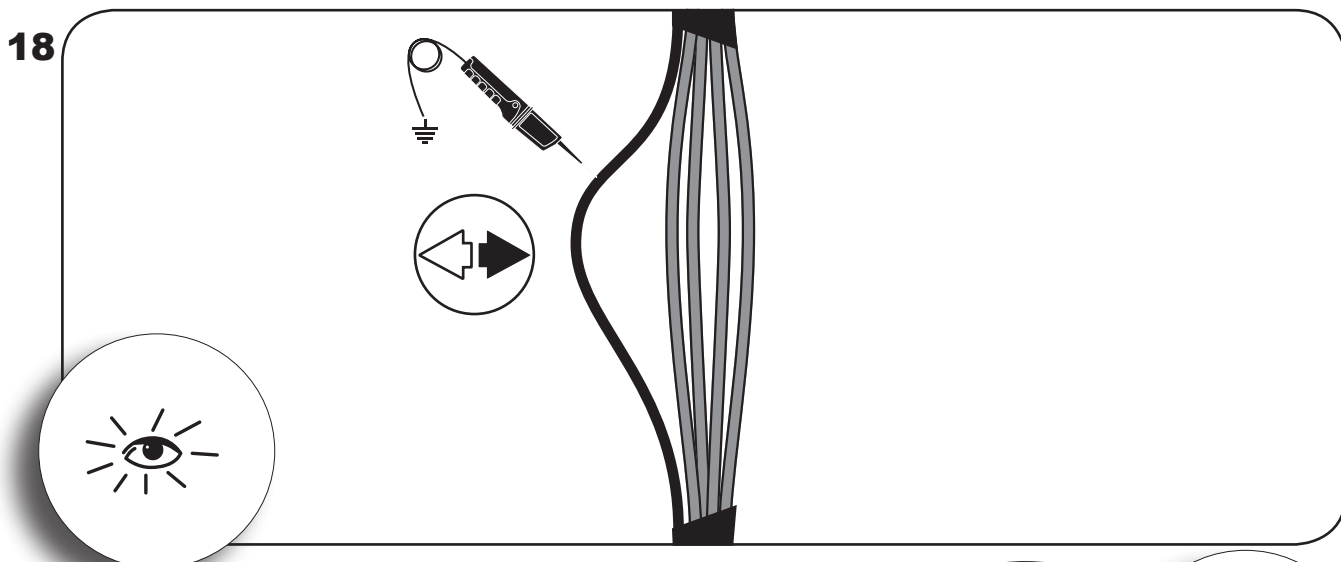
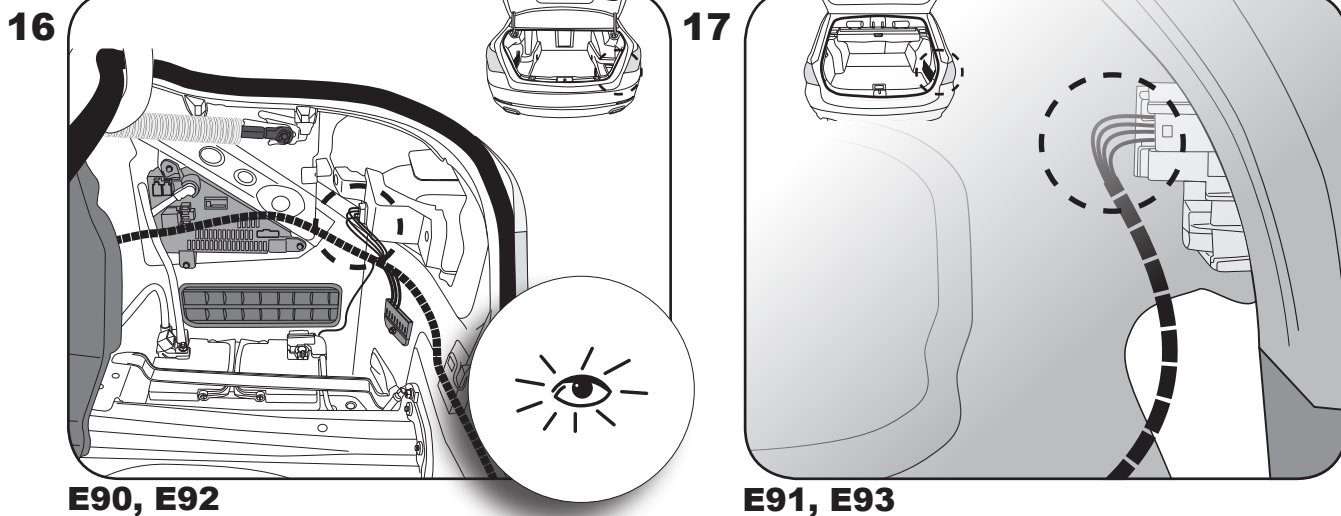
**e-kit or/bk → cabel car bk/ye**

**STOP**



# EINBAUANLEITUNG

**E90 / E91 / E92 / E93**



**E-Satz bu/bn** → **kabel** 

**e-kit bu/bn** → **cabel car** 

# EINBAUANLEITUNG

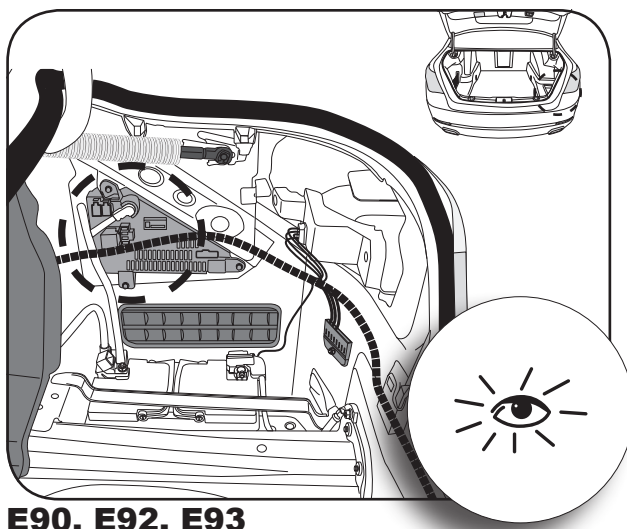
**E90 / E91 / E92 / E93**

**20**



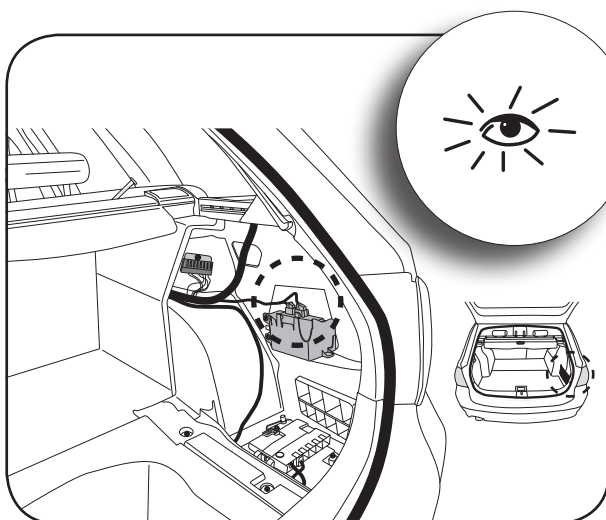
**OPTION 1 → 21-23, 29-30**  
**OPTION 2 → 24-30**

**21**



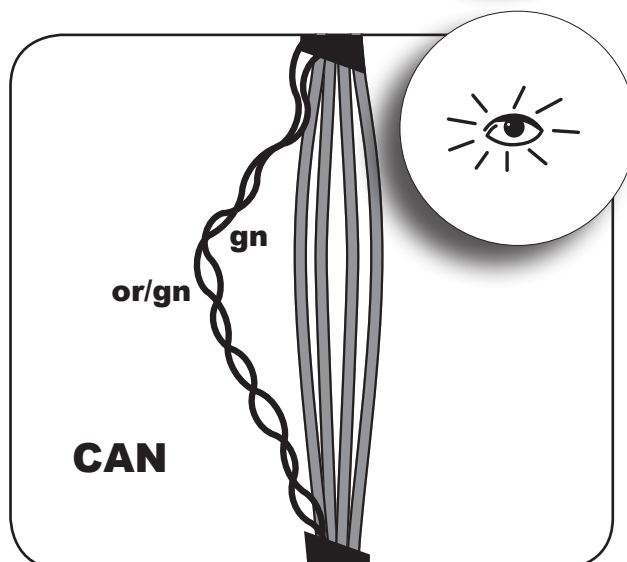
**E90, E92, E93**

**22**

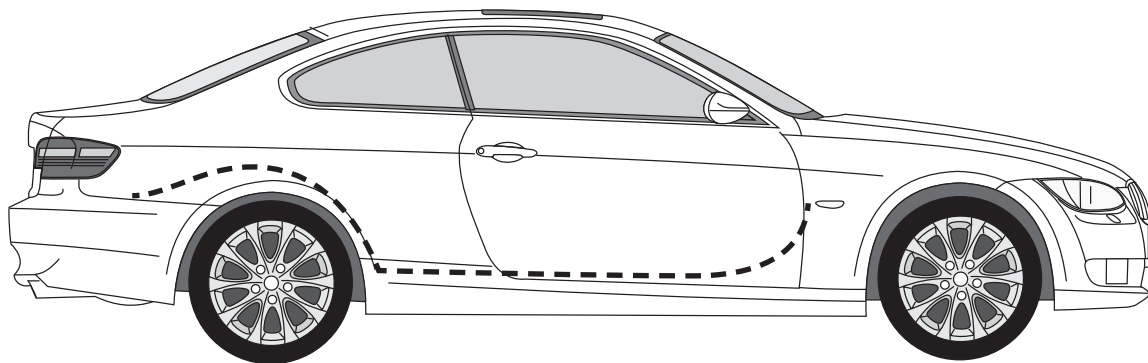


**E91**

**23**



**24**

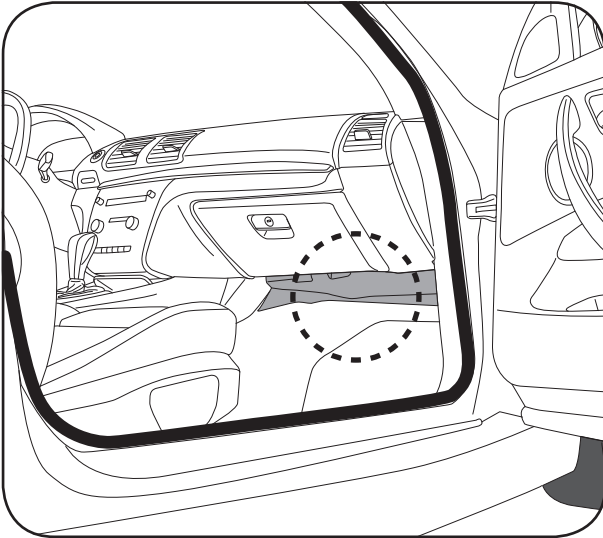


**E-Satz CAN →**  
**e-kit CAN →**

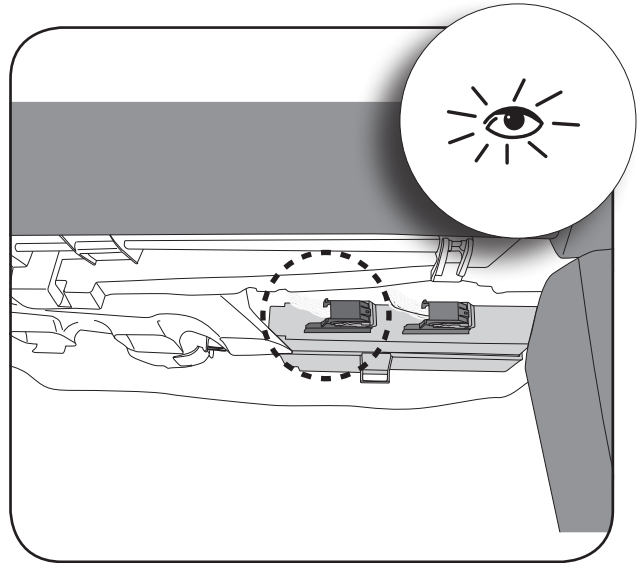
# EINBAUANLEITUNG

E90 / E92 / E93

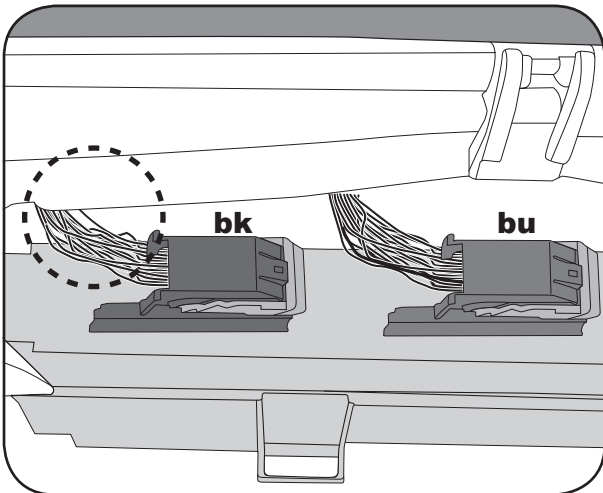
25



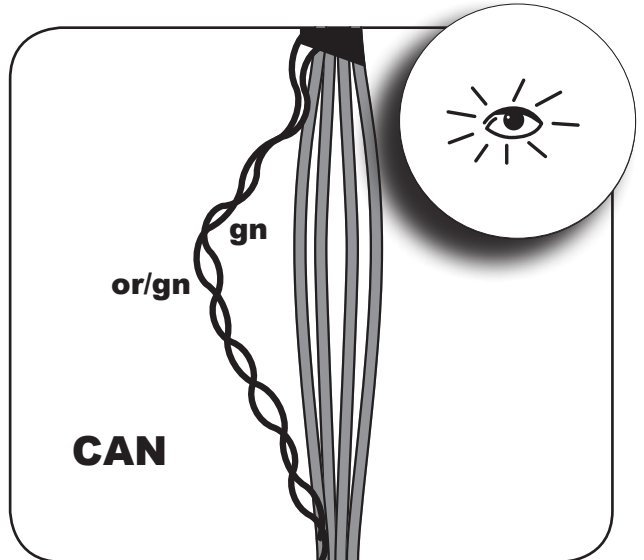
26



27

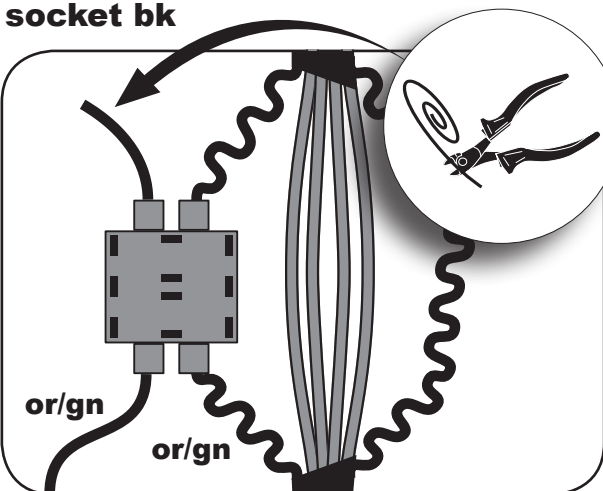


28

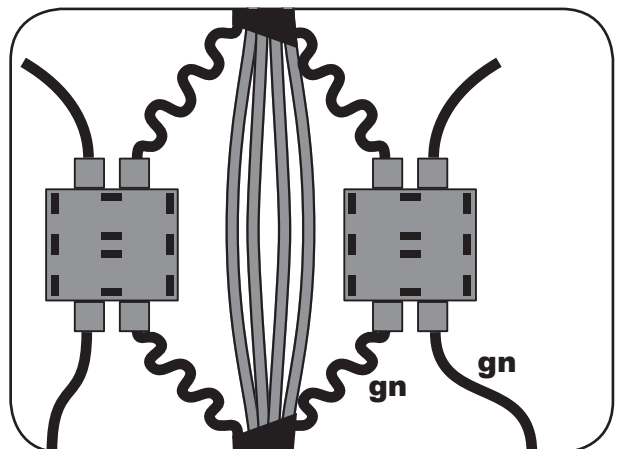


Stecker bk  
socket bk

29



30



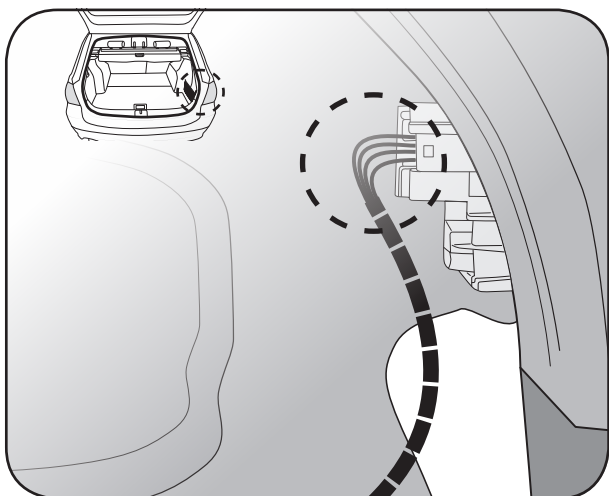
E-Satz or/gn → kabel or/gn  
e-kit or/gn → cabel car or/gn

E-Satz gn → kabel gn  
e-kit gn → cabel car gn

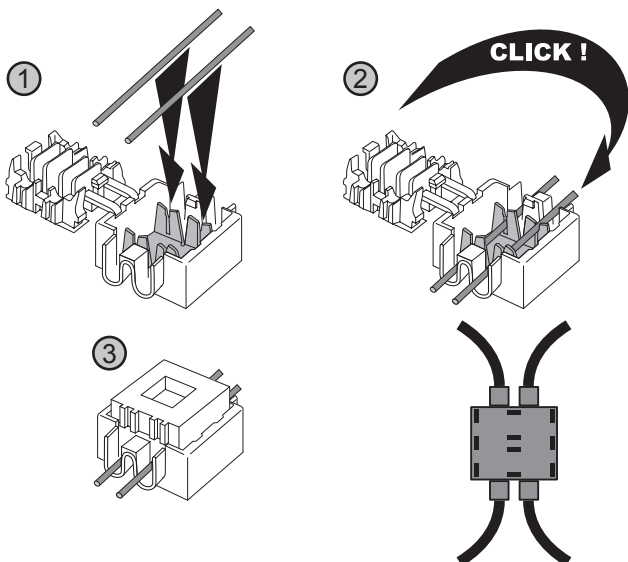
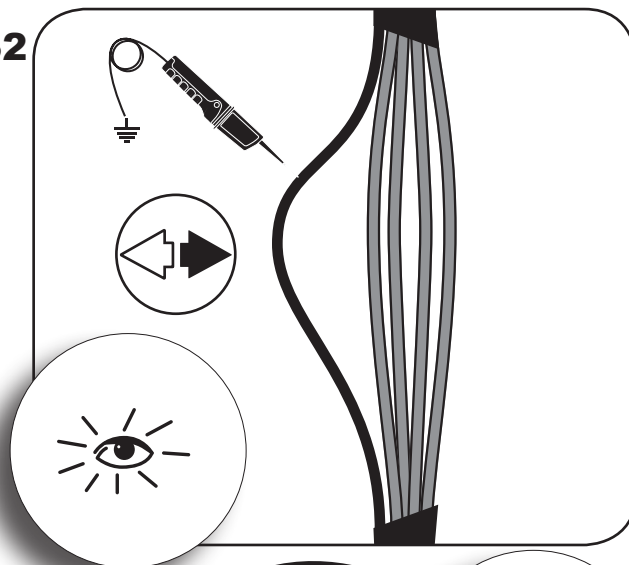
# EINBAUANLEITUNG

## F30, F31, F32, F33, F34

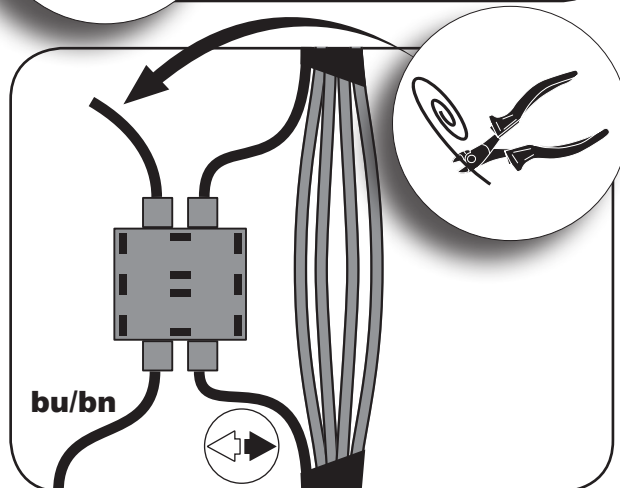
31



32

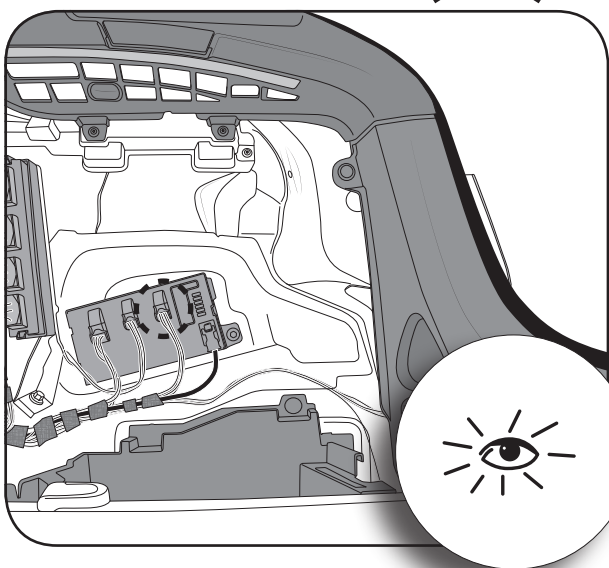


33

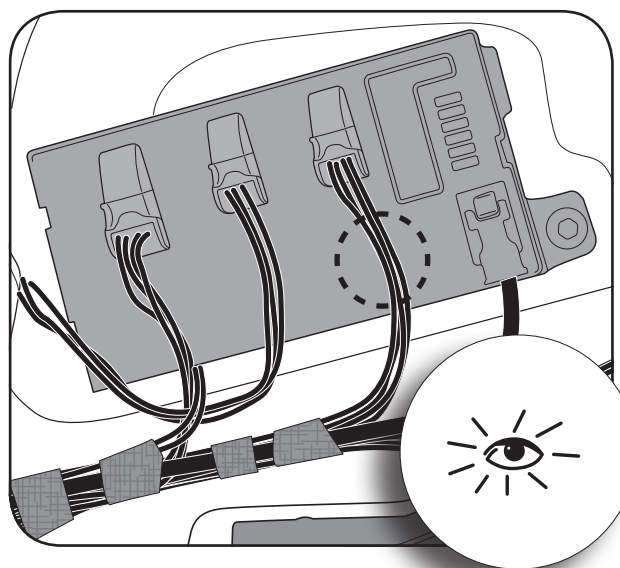


E-Satz bu/bn → kabel  
e-kit bu/bn → cabel car

34

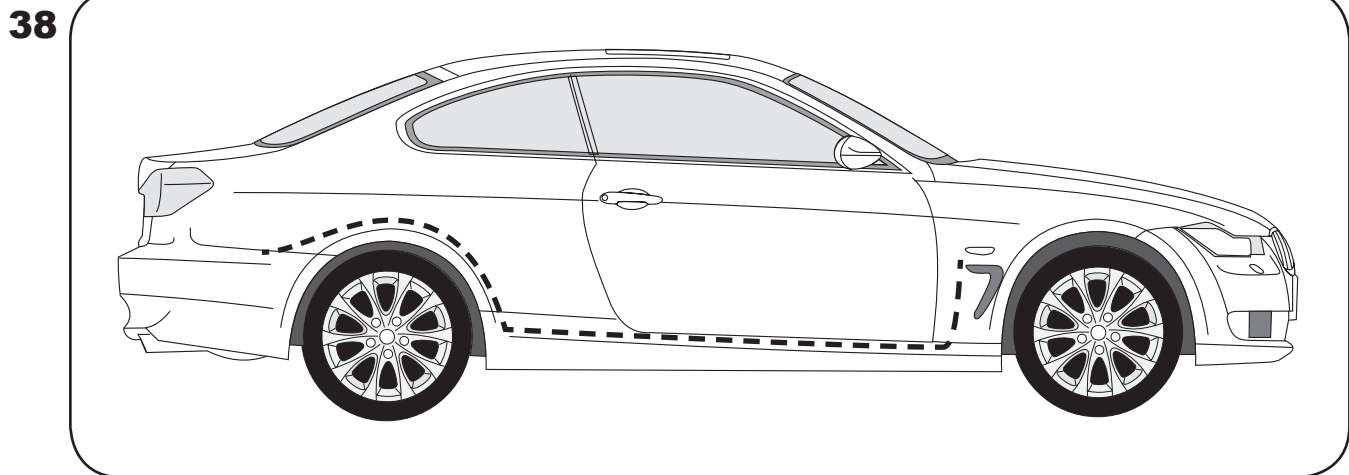
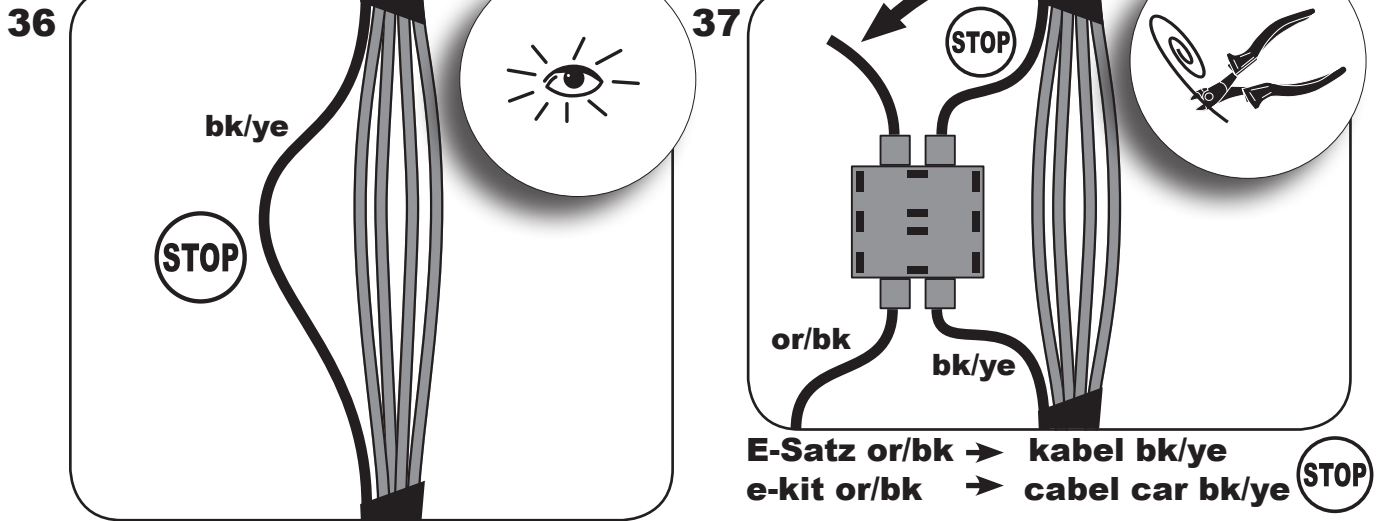


35

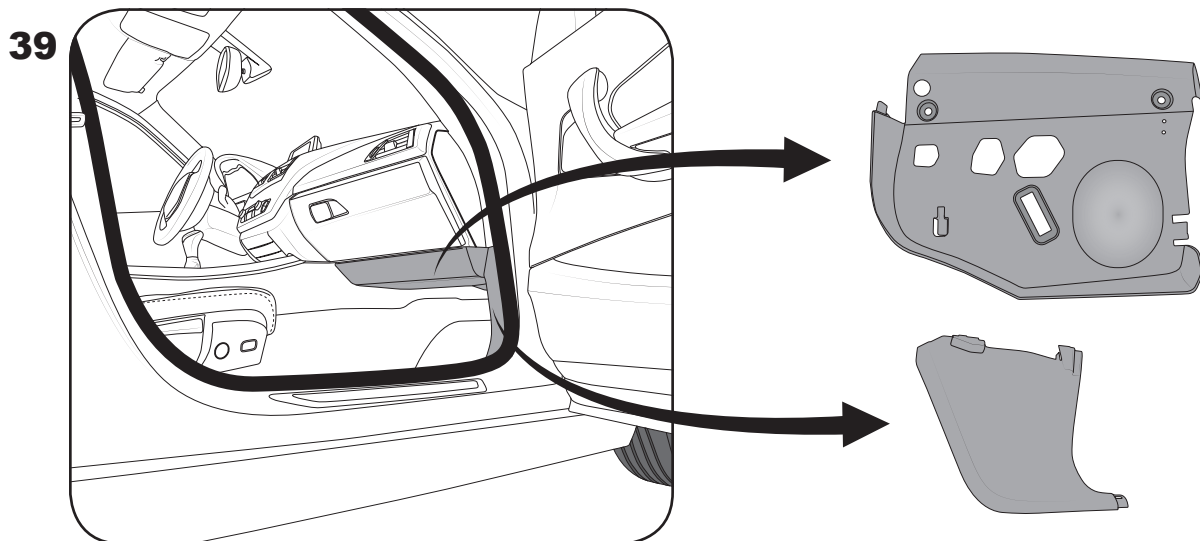


# EINBAUANLEITUNG

## F30, F31, F32, F33, F34

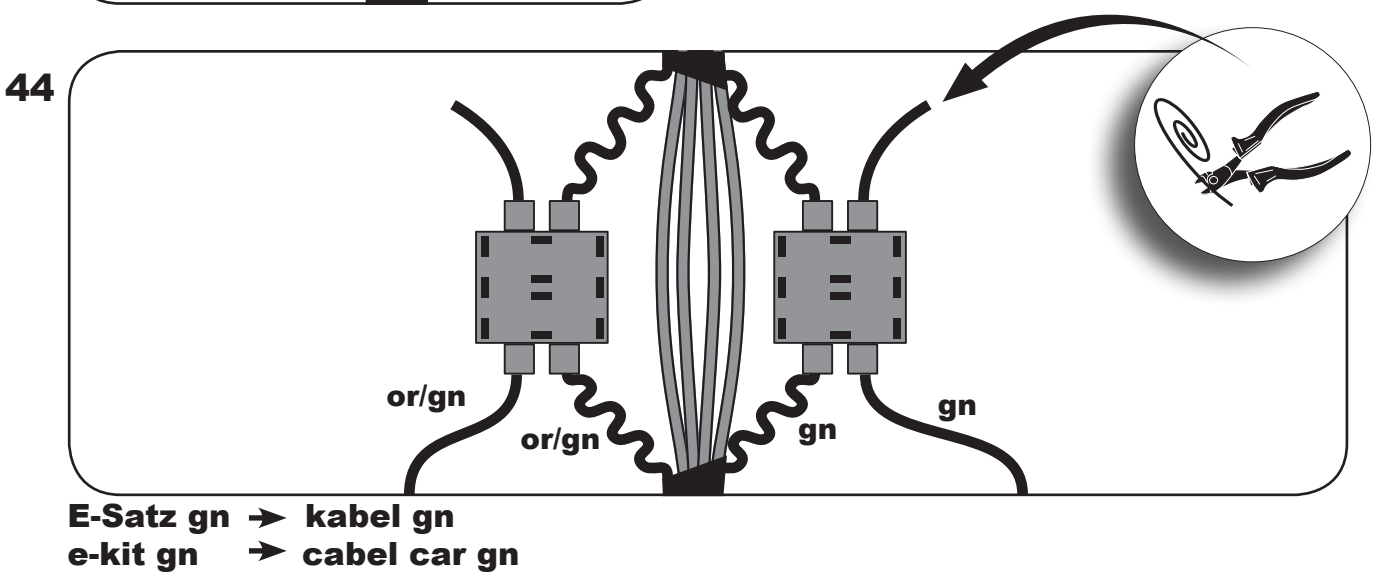
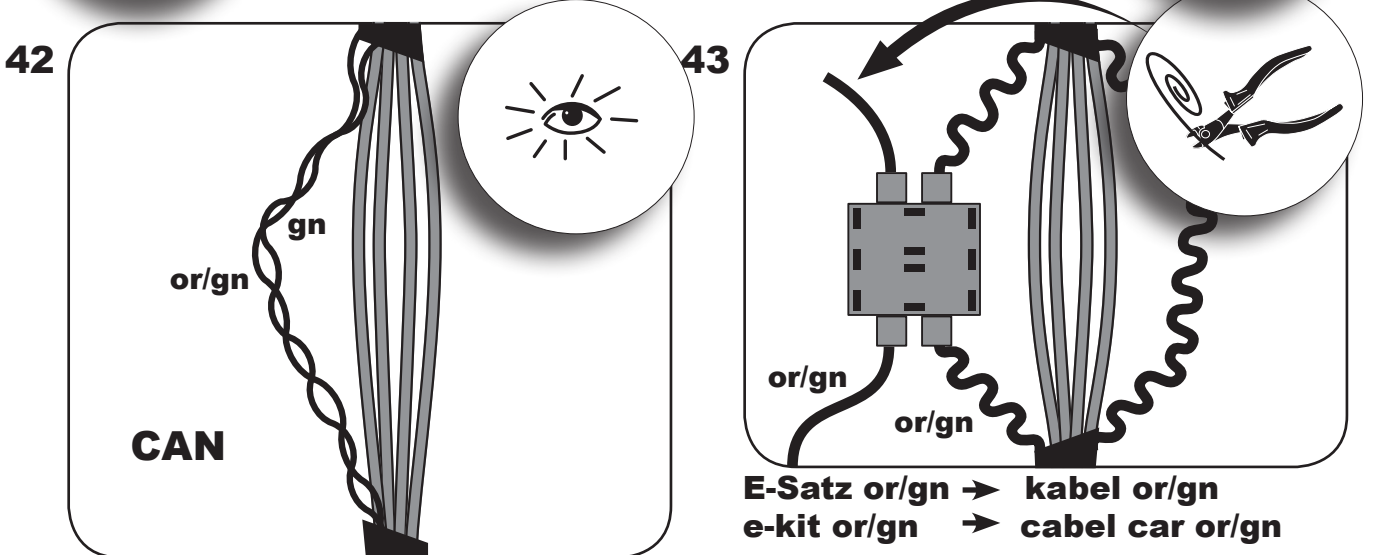
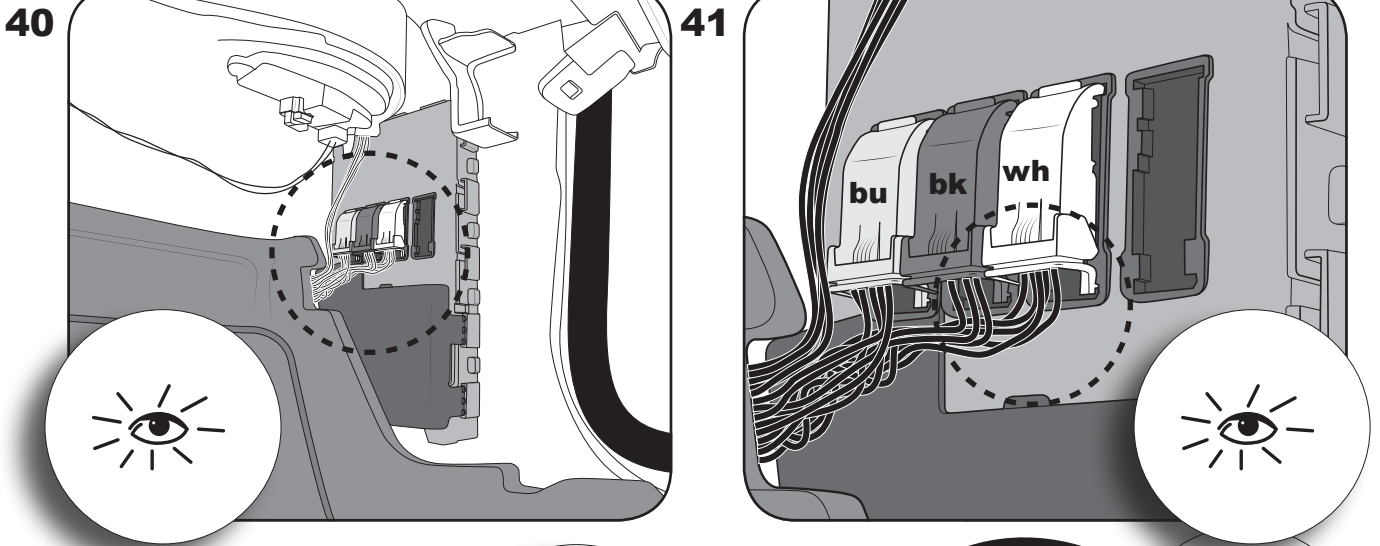


E-Satz CAN →  
e-kit CAN →



# EINBAUANLEITUNG

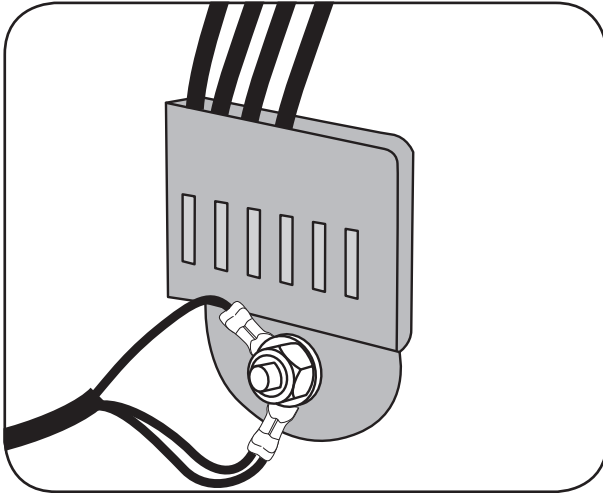
## F30, F31, F32, F33, F34





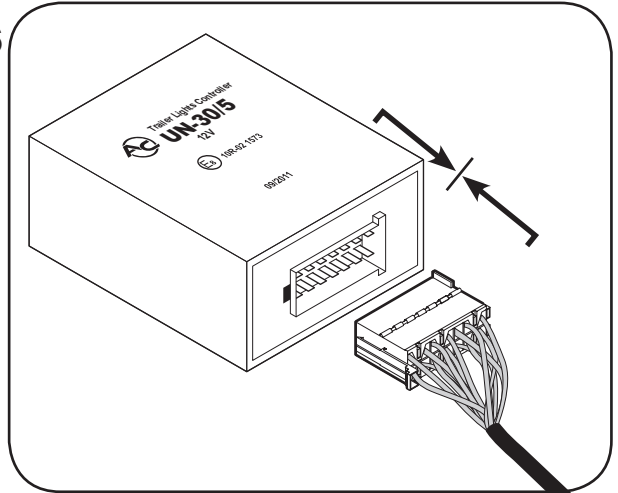
# EINBAUANLEITUNG

45



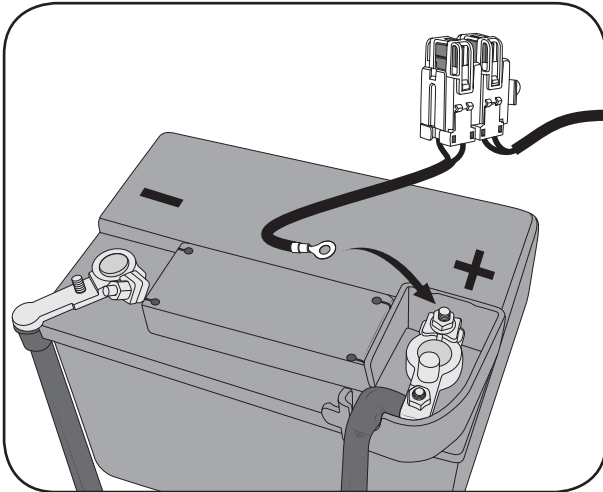
E-Satz bn → , + bn/wh 13 pin  
 e-kit bn → , + bn/wh 13 pin

46



Modul UN-30/5 → Stecker 14 pin E-Satz  
 modul UN-30/5 → socket 14 pin e-kit

47




E-Satz rd → +30  + rd/bu 13 pin  
 e-kit rd → +30  + rd/bu 13 pin


48




49


**PDC**







→ **NO CODING**



→ **BMW SERVICE  
ISTA/P  
Initialize PDC  
Module**