

## FITTING INSTRUCTION

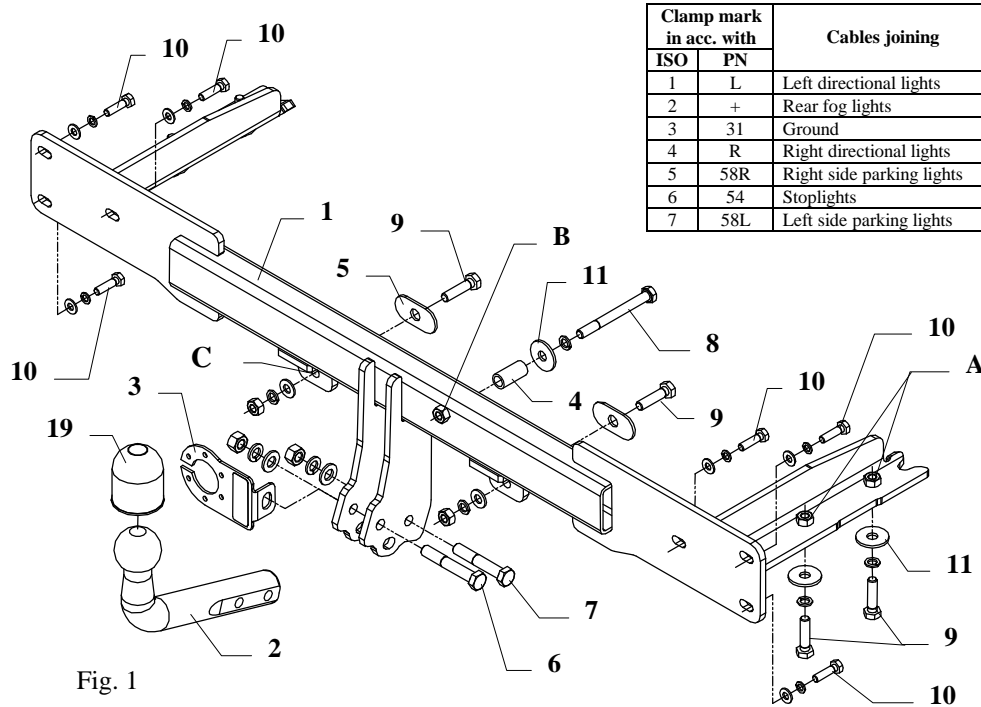


Fig. 1

This towing hitch is designed to assembly in following cars:  
**KIA CARNIVAL**, produced since 1997 till 12.1999, catalogue no. **T14**  
 and is prepared to tow trailers max total weight up to **2000 kg** and max  
 vertical load **80 kg**.

### From manufacturer

Thank you for buying our product. Their reliability has been confirmed in many tests. Reliability of towing hitch depends also on correct assembly and right operation. For this reasons we kindly ask to read carefully this instruction and apply to hints.

*The towing hitch should be install in points described by a car producer.*

|   |                      |
|---|----------------------|
| Torque settings for nuts and bolts (8,8): |                      |
| <b>M 8</b> - 25 Nm                        | <b>M 10</b> - 55 Nm  |
| <b>M 12</b> - 85 Nm                       | <b>M 14</b> - 135 Nm |

## The instruction of the assembly

1. Disassemble a bumper and a spare wheel.
2. From the bumper, twist off the brackets (they will not reassembled).
3. Insert the main bar of towing hitch in the chassis and fix with M12x40mm (pos. 9) bolts in marked points (pos. A).
4. Through the holes (pos. B and C) drill to  $\varnothing 10,5$  mm hole. From the inside, drill the hole (pos. B) to  $\varnothing 17$  mm.
5. Disassemble the towing hitch an then join with the bumper after previous cut a fragment in the bumper. Look the fig. 2.
6. In this way prepared towing hitch with the bumper apply to the chassis again and fix through hole pos. A.
7. Apply the distance sleeve  $\varnothing 17$ , L=35mm (pos. 4) to the hole (pos. B) and fit with the M10x100mm (pos. 8) bolt. By the holes (pos. C) fix by M10x40mm (pos. 9) bolts and longitudinal washers (pos. 5).
8. Fix the tow-ball (pos. 2) and the socket plate (pos. 3) using bolts M12x75mm (pos. 6) and M12x70mm (pos. 7).
9. Fix tight all bolts according to the torque shown in the table.
10. Connect the kit wires to the electric installation, in accordance with the instructions of the car.
11. Complete the possible decreases of the paint cover of hitch, originate during the installation.

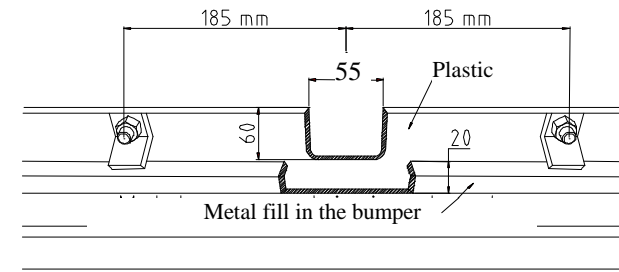


Fig. 2

### NOTE

After install the towing hitch you should get adequate note in registration book (at authorised service station). The car should be equipped with:

- Indicators
- Tow mirrors

After 1000km check all bolts and nuts. The ball of towing hitch must be always kept clear and conserve with a grease.

## Part list:

|   |   |   |  |
|---|---|---|--|
| Pos. 1<br>Main bar<br>PCS.: 1                                 | Pos. 5<br>Longitudinal washer<br>60x30x3mm<br>PCS.: 2 | Pos. 10<br>Bolt 8,8 B<br>M8x30mm<br>PCS.: 6 | Pos. 15<br>Spring washer<br>ø12mm<br>PCS.: 2 |
| Pos. 2<br>Tow ball<br>PCS.: 1                                 | Pos. 6<br>Bolt 8,8 B<br>M12x75mm<br>PCS.: 1           | Pos. 11<br>Washer<br>ø37xø13x3mm<br>PCS.: 5 | Pos. 16<br>Spring washer<br>ø10mm<br>PCS.: 7 |
| Pos. 3<br>Socket plate<br>PCS.: 1                             | Pos. 7<br>Bolt 8,8 B<br>M12x70mm<br>PCS.: 1           | Pos. 12<br>Plain washer<br>ø12mm<br>PCS.: 2 | Pos. 17<br>Spring washer<br>ø8mm<br>PCS.: 6  |
| Pos. 4<br>Distance sleeve<br>ø17xø12,5mm<br>L=35mm<br>PCS.: 1 | Pos. 8<br>Bolt 8,8 B<br>M10x100mm<br>PCS.: 1          | Pos. 13<br>Plain washer<br>ø10mm<br>PCS.: 2 | Pos. 18<br>Nut 8 B<br>M12<br>PCS.: 2         |
|   | Pos. 9<br>Bolt 8,8 B<br>M10x40mm<br>PCS.: 6           | Pos. 14<br>Plain washer<br>ø8mm<br>PCS.: 6  | Pos. 19<br>Nut 8 B<br>M10<br>PCS.: 2         |
|   |   |   | Pos. 20<br>Ball cover<br>PCS.: 1             |



## PPUH AUTO-HAK S.J.

Produkcja Haków Holowniczych  
Henryk & Zbigniew Nejman  
76-200 SŁUPSK ul. Słoneczna 16K  
tel/fax (059) 84-14-414; 84-14-413  
e-mail: [office@autohak.com.pl](mailto:office@autohak.com.pl)  
[www.autohak.com.pl](http://www.autohak.com.pl)

### Towing hitch (without electrical set)

Class: **A50-X** Cat. no. **T14**

Designed for:

Manufacturer: **KIA**

Model: **CARNIVAL**

produced since 1997 till 12.1999

Technical data:

**D-value: 11,6 kN**

maximum trailer weight: **2000 kg**

maximum vertical cup load: **80 kg**

Approval number according to Directive 94/20/EC: **e20\*94/20\*0289\*00**

### Foreword

This towing hitch is designed according to rules of safety traffic regulations. The towing hitch is a safety component and can be installed only by qualified personnel. Any alteration or conversion of the towing hitch is prohibited and would lead to cancellation of design certification. Remove insulating compound and underseal from vehicle (if present) in the areas of the matting surfaces of the towing hitch. The vehicle manufacturer's specifications regarding trailer load and max. vertical cup load are decisive for driving, and values for the towing hitch cannot be exceeded.

*D-value formula:*

$$\frac{\text{Max trailer weight [kg]} \times \text{Max vehicle weight [kg]}}{\text{Max trailer weight [kg]} + \text{Max vehicle weight [kg]}} \times \frac{9,81}{1000} = D \text{ [kN]}$$